

RS-485 Quick Start Guide – IDEA™ Motor Series



EC042B IDEA™ Motor

Items:

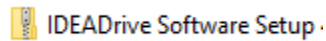
Name	Part Number
I/O Cable	56-1352
USB Cable	56-1346
Flash drive	
Power Supply	56-2114
I/O Box	SP22122-15
I/O USB	56-2115
USB to RS485 converter	UTR4852
RS485 Cable	56-1536-1
Motor/drive	EC042B-x0MP-9xx

Power plug blades for international kits supplied

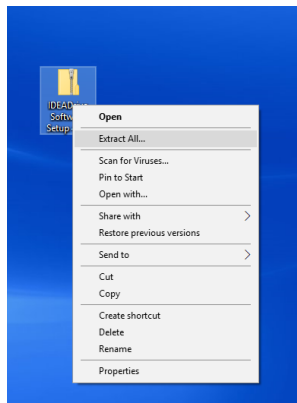
Install the Software on your PC

PC Windows-based

1. From the flash drive copy to your desktop the zipped file labeled IDEADrive Software Setup



2. Right click on the folder and extract files



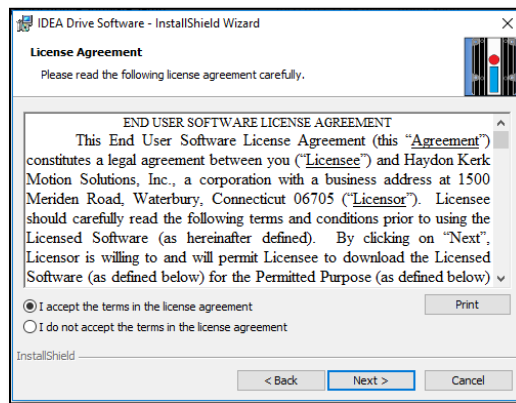
3. Double click on the “IDEADrive Software Setup” to begin the installation

ISSetupPrerequisites	10/18/2017 3:37 PM	File folder	
IDEADrive Software Setup	10/2/2017 11:39 AM	Application	54,621 KB

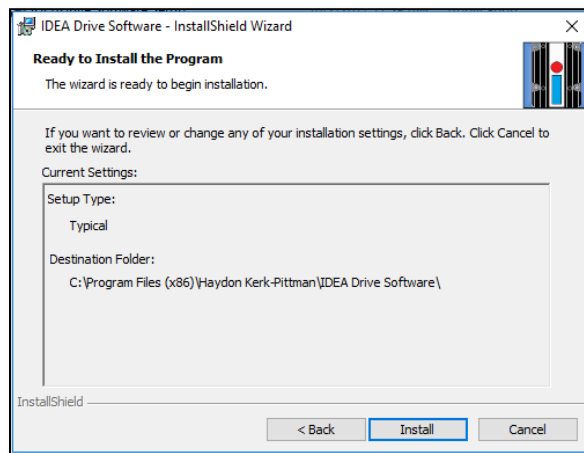
4. Click “Next.”



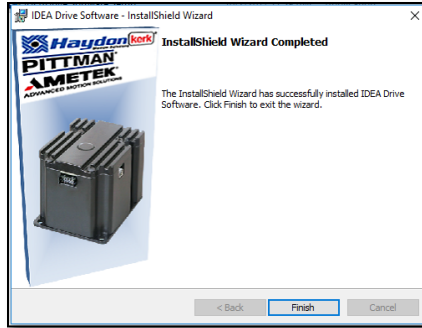
5. Select “I accept the terms in the license agreement” and click “Next.”



6. Click “Install”



7. Click “Finish”

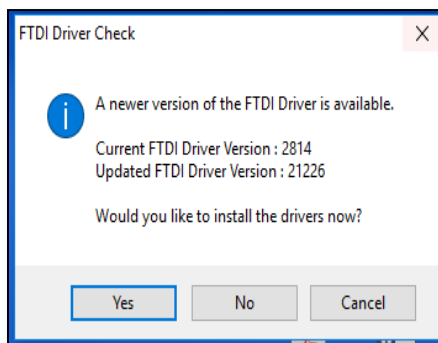


8. Double Click the idea drive icon

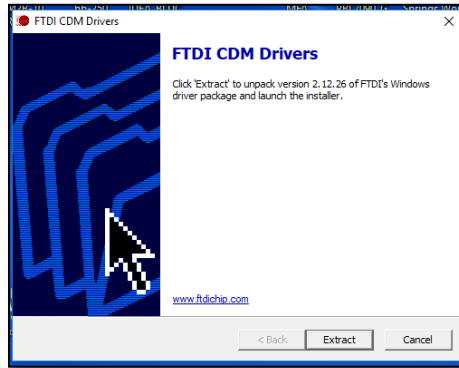


If no FTD driver has been installed or if it needs an update. The following windows will appear

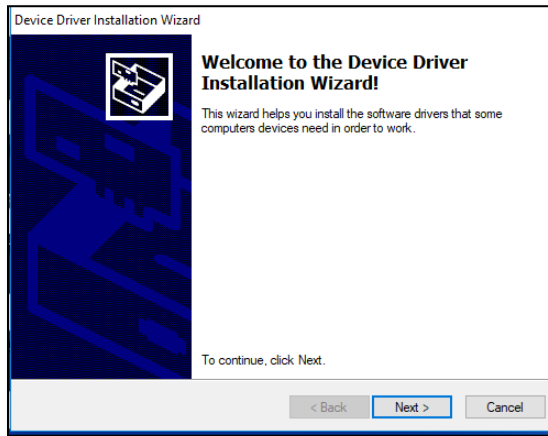
1. Click yes when it asks for the update



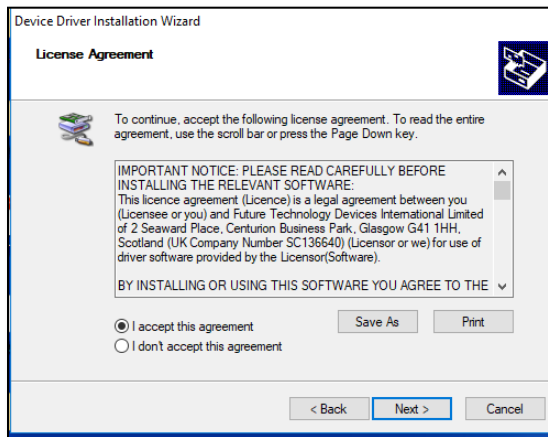
2. Click “Extract”



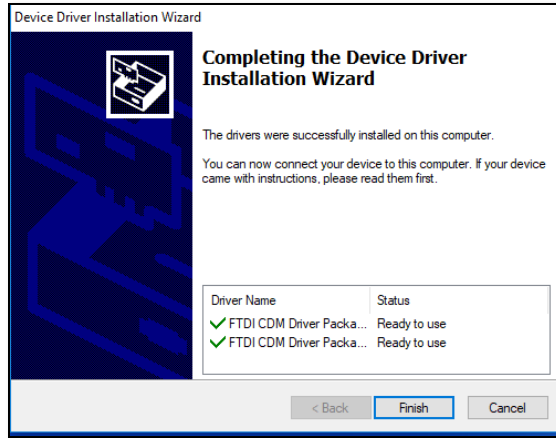
3. Click “Next”



4. Accept agreement and click “Next.”

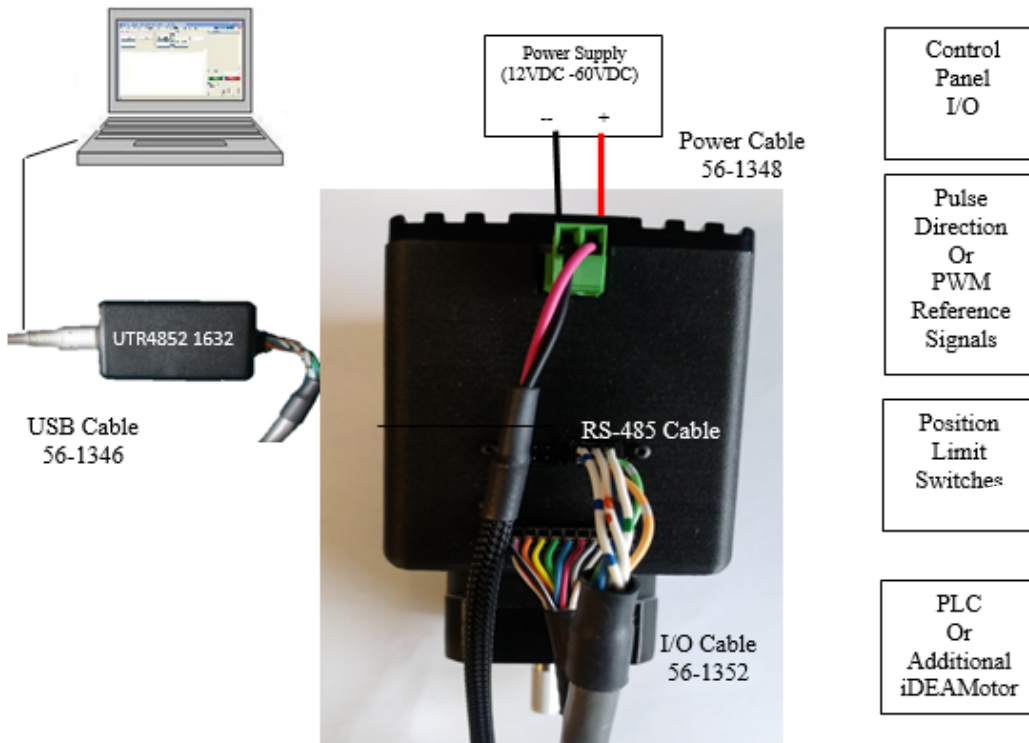


- Once installation completes, click “Finish”



Operating motor/drive

- Plug USB Cable 56-1346 to computer and UTR4852 convertor. Plug 56-1536-1 to convertor and Motor. Connect Power Supply 56-2114 into IDEA Drive USB and power port respectively.



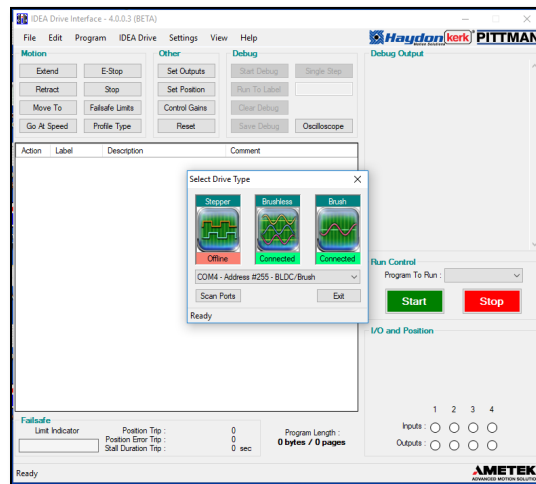
2. Plug I/O USB cable 56-2115 into I/O box SP822122-15



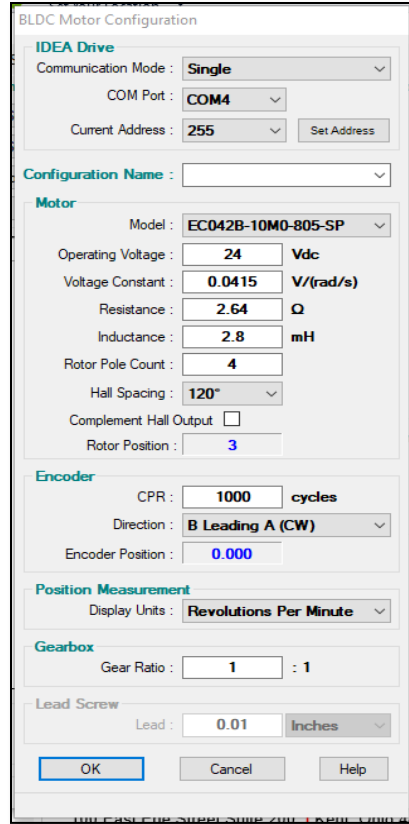
3. Plug the USB cables in pc and Ensure Drive is recognized by the computer prior to running software, otherwise the GUI will open in offline mode. Plug power supply into wall receptacle. Launch IDEA Drive GUI by double clicking on IDEA Drive icon.



4. Select brushless



5. In the drop down, menu select model number. Give it a configuration name.



6. Select a motion command and fill out the information. Highlighted in orange.

