

## Pulse Diagnosis in Traditional Chinese Medicine



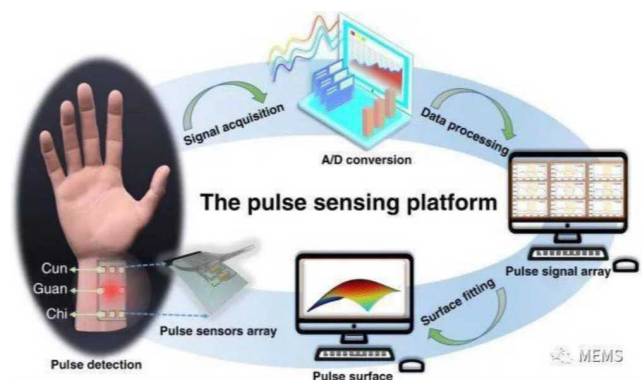
Pulse diagnosis machines, often used in Traditional Chinese Medicine (TCM) and Ayurveda, are designed to assess and analyze a patient's pulse, to gather diagnostic information about their health.

The principles of pulse diagnosis typically include:

- **Acupuncture Pulse Diagnosis:** In TCM, pulse diagnosis involves palpating pulses at various points on the radial artery of both wrists. Traditional practitioners use specific locations and depths to assess the quality and characteristics of the pulses.
- **Machine-Assisted Pulse Diagnosis:** Modern devices assist the pulse diagnosis process via sensors such as piezoelectric sensors, to capture pulse information. The sensors detect the pulsations on the radial artery, and the data can be processed electronically.
- **Data Analysis:** Pulse data identifies qualities such as rate, rhythm, depth, width and strength of the pulses. TCM often associates different pulse qualities with specific organ systems and conditions.

- **Report and Interpretation:** Data can be interpreted through various reports that provide insights into the balance of Qi (energy) and the state of various organs in the body according to TCM principles.

Because the sensitivity of each TCM practitioner varies, it can be difficult to transfer personal experiences from one practitioner to another. Now, through a combination of medical expertise and digital signal process technology, TCM pulse measuring instruments provide consistent and reproducible results that instantly visualize and analyze a patient's pulse profile.

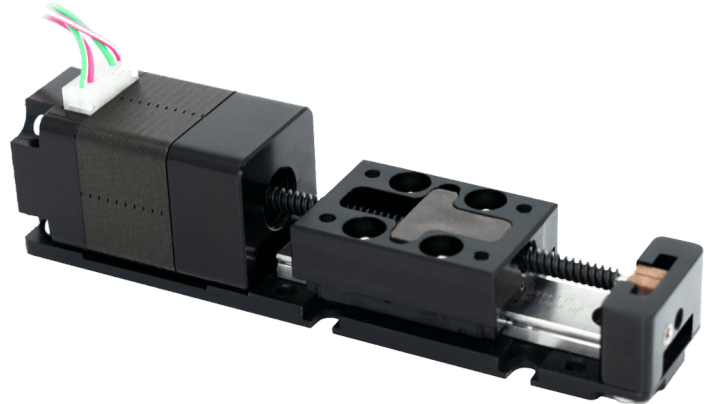


HKP provides the motion solutions that power pulse diagnosis machines. HKP's LC15 motor and compact **MiniStage** Linear Actuator position the sensors in the correct, personalized place for each patient. The precise movement occurs along the X, Y, and Z axis.

**Application Challenges:**

1. Size of product and light weight
2. Accuracy and quiet movement
3. Easy to control.

MiniStage, which is the industry's most compact motorized hybrid stepper actuator, addresses these 3 requirements by combining the core AMETEK Haydon Kerk Pittman hybrid actuator and lead screw technology with the guidance and load handling capacities of a recirculating ball bearing profile rail. The fully assembled and tested MiniStage solution makes it easier for engineers to focus on end-product design to address their motion requirements. MiniStage's precise linear guidance is



delivered in a small footprint, with ultra-quiet operation, making it an ideal solution for pulse diagnosis machines that requires accurate positioning.

To learn more about why MiniStage is the right choice for pulse diagnosis machines and other medical imaging systems, please [click here](#) or [Contact Us Today](#)

**Headquarters**

Haydon Kerk Motion Solutions, Inc  
 Haydon Products Division  
 1500 Meriden Road  
 Waterbury, CT 06705 USA

+1 800 243 2715 (Toll Free)

+1 203 756 8724 (Fax)

+1 203 756 7441 (International)

info.haydonkerk@ametek.com

www.HaydonKerkPittman.com

**Locations**

Waterbury, CT  
 Milford, NH  
 Harleysville, PA  
 New District, Changzhou, China  
 Jiuting, Shanghai, China

Bouguenais, France

Pegnitz, Germany

Bangalore, India

Suwon-city, Gyeonggi-do, Korea

Penang, Malaysia

Reynosa, Tamaulipas, Mexico